



**Corridor Energy
Cooperative**

FEBRUARY 2026

Corridor Connections

A MONTHLY PUBLICATION FOR OUR MEMBERS



We are seeking members to serve on the nominating committee and qualified candidates to run for board positions in the 2026 election.

Help Shape the Future of Corridor Energy

The Corridor Energy Board of Directors is seeking seven members, one from each voting district, to serve on the Nominating Committee. This year, Districts 2, 3, and 7 are up for election.

Members representing these districts will help identify qualified candidates to run for the Board of Directors. In addition, the cooperative will share the names of members who express interest in running for the Board with the appropriate Nominating Committee members.

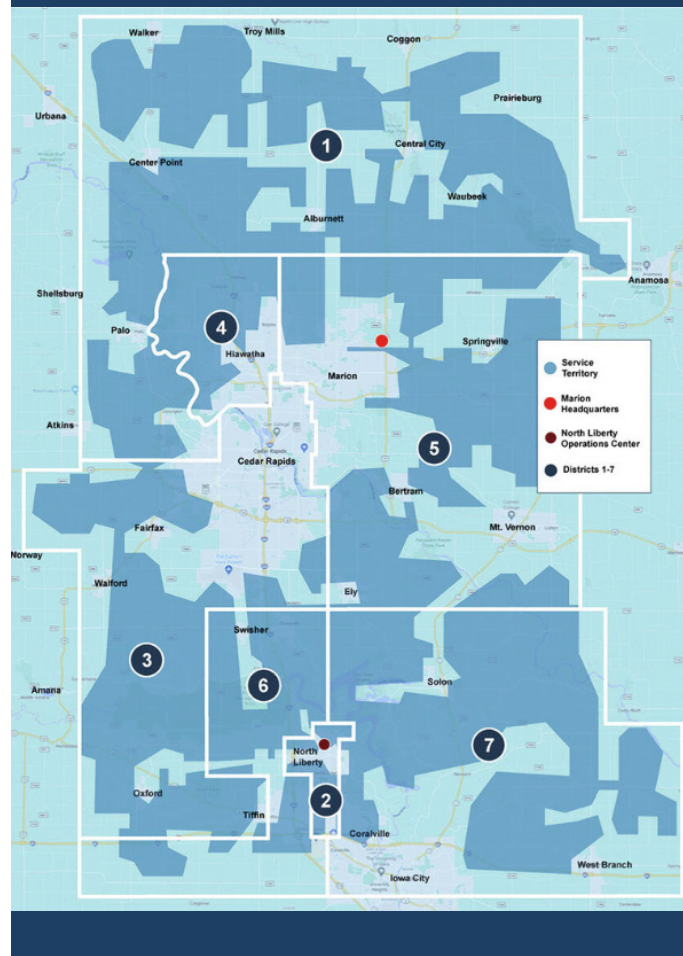
The Nominating Committee meets once each year in June for a dinner meeting at Corridor Energy's headquarters in Marion. The meeting typically lasts about two hours. During this meeting, committee members from Districts 2, 3, and 7 present candidates for placement on the election ballot. Members who have not previously served on the Nominating Committee are preferred.

Director Elections

The Board of Directors is elected by the membership each September and is responsible for establishing policies and representing members' best interests. Members who are interested in contributing to the cooperative's governance are encouraged to consider running for a Board position. Information about director qualifications and responsibilities is available on our website.

If you are interested in serving on the Nominating Committee, or if you live in Districts 2, 3, or 7 and would like to run for the Board, please contact Breanna at 319-377-1587. Your participation helps shape the future of your cooperative!

Corridor Energy Board Districts





Protect Your SmartHub Account with 2FA

Safeguarding your personal information has never been more important. That's why we've added Two-Factor Authentication (2FA) for SmartHub account members — providing an extra layer of protection and greater peace of mind every time you log in.

What is Two-Factor Authentication (2FA)?

Two-Factor Authentication adds an additional step to the login process to help keep your account secure. Instead of relying on your password alone, 2FA requires a second form of verification —such as a one-time code sent to your phone or email. Even if someone were to obtain your password, this extra step makes it much more difficult for unauthorized users to access your account.

How To Set Up 2FA On Your SmartHub Account:

Enabling Two-Factor Authentication is quick and easy. Once activated, you'll log in using your password and a one-time verification code. Follow these steps to get started:

1. Log in to your SmartHub account
2. Go to settings, then Two-Factor Authentication
3. Check the box to enable 2FA
4. Choose how to receive your one-time codes (text or email)
5. Enter your information for text or email, and click continue

After clicking continue, you'll receive a one-time verification code by email or text message, depending on the delivery method you selected. Enter this code to complete your setup.

If you have any questions or need help enabling Two-Factor Authentication, contact Consumer Services at 319-377-1587.

Discover How Energy Efficient Your Home Is

Have you ever wondered how well your home is saving energy or where your home may be losing efficiency? Corridor Energy's Residential Energy Evaluation Program offers two easy ways for members to better understand their home's energy use and uncover opportunities to improve efficiency and reduce costs.

Online Energy Usage Evaluation

Our Energy Usage Evaluation is a convenient online assessment that provides personalized insights into how energy is used in your home. Once you submit your evaluation, our Member Services staff will review your information and share tailored recommendations to help improve efficiency, increase comfort, and lower your energy bills.

Printable Self Assessment

Prefer to evaluate your home on your own? We also offer a printable self-assessment for members who want a general overview of their home's energy efficiency. This option includes helpful recommendations related to building standards and simple steps you can take to improve efficiency. Please note that Corridor Energy will not receive or review completed self-assessments.

Both options are available on our website at www.corridorenergy.coop/energy-efficiency. Members without internet access are encouraged to contact our office to request a paper copy of the evaluation. If you have questions about the program, reach out to our Member Services department.

Four Ways an Energy Audit Can Benefit You

A home energy audit can determine the overall efficiency of your home or business and ways to improve it. Here are the main benefits of conducting an energy audit.

- \$ An audit will identify where most of your energy use is going and ways to use energy more efficiently to save money.
- \$ It can determine if appliances and heating/cooling equipment are properly sized for the home or business.

- \$ An audit can identify potential safety issues with home wiring and ventilation.
- \$ Making changes based on the audit recommendations will raise your property value.




Powering Education In Our Communities

One of the many ways Corridor Energy invests in the communities we serve is through our college scholarship program. Last year's scholarship recipients are now completing their first year of college, and below they share reflections on their first semester. We wish them continued success as they complete their first year.

The application period for the 2026-2027 Corridor Energy Scholarship Program is now open. Corridor Energy

is offering multiple scholarships to high school seniors graduating this May who plan to attend a college, university, or vocational/technical school in Iowa in the fall of 2026.

Scholarship applications, along with complete rules and instructions, are available at www.corridorenergy.coop.

 **Application deadline: March 2, 2026.**

"My first semester at Iowa State has been great. I am majoring in Agricultural Systems Technology & Seed Science. I want to thank Corridor Energy for the generous support of my educational expenses. It was a major help as I began my studies and worked to serve the over 20,000 members of the Iowa FFA."



"My first semester at the University of Iowa was very exciting. I'm majoring in Biochemistry and exploring potential fields I'm interested in. I would like to express my gratitude to Corridor Energy for providing this scholarship. It has helped support my higher education and opportunities I wouldn't have gotten otherwise. Thank you."



"I am so happy with my decision to attend Mount Mercy to pursue a degree in nursing. Stepping into college was an exciting transition, with playing on the Women's soccer team, taking challenging courses, and building my community at school. I want to express my heartfelt gratitude to Corridor Energy for their generous scholarship. I am forever grateful."



"I would like to express my gratitude towards Corridor Energy for the support of this scholarship towards my education at the University of Iowa. I have majored in biology on the pre-medicine track. I have explored new experiences and job opportunities to better prepare me for my future. I would like to thank Corridor Energy for helping me receive a higher level of education to pursue my dreams."



"Attending Northwest Iowa Community College has proven to be an excellent decision. I have enjoyed building strong connections with my classmates and gaining hands-on experience. I am eager to begin my career in the powerline industry. This scholarship allows me to pursue my professional goals and your generosity and investment in my future are truly appreciated."



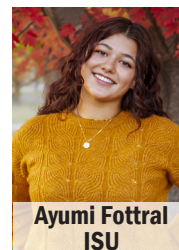
"In my first semester at Kirkwood I have learned so much through my classes. My A&P class taught me so much about the human body and I really enjoyed getting to work with the cadavers. This scholarship has helped me significantly financially in order to complete my nursing degree. I'm honored to have been chosen for the Corridor Energy scholarship. I truly can't thank you enough!"



"I would like to thank Corridor Energy for the fantastic opportunity this scholarship has given me. It gave me more time to focus on getting involved at ISU. I am majoring in Agricultural Business with a minor in Marketing. I am involved in many clubs and have loved every minute of my experience at Iowa State. Thanks for helping me achieve my goals and dreams of pursuing a career in agriculture."



"My first semester studying Biomedical Engineering at Iowa State has been an incredibly rewarding experience. I joined the Biomedical Engineering Society to connect with peers and learn about the research happening at the university. I am excited to continue my learning and experience new opportunities. Thank you for your generous support, which has played a huge role in making my education possible."



Caring For Our Community Through RECare

RECare is a crisis assistance program that helps low-income members pay their electric bills and weatherize their homes during times of need.

When you give to RECare, your donation stays local—helping families and neighbors right here in our community. Every dollar goes directly to those in need and is distributed through a local community action agency. There are no administrative costs, and all contributions are tax-deductible.

HOW TO DONATE

Supporting RECare is simple and flexible. You can contribute in any of the following ways:

- Through the SmartHub app
- Online at corridorenergy.coop/payment-assistance
- By notation on your bill stub



Contributions may be made as a one-time gift or added to your monthly bill. You may change or discontinue your donation at any time by contacting our office. Contact our Consumer Services department if you have any questions about this program.



Chicken and Broccoli Tortellini Casserole

1/4 cup butter	1/4 cup flour
3 1/2 cups chicken broth	1 1/2 cups half-and-half
2 garlic cloves, minced	1 1/2 cups Parmesan cheese, divided
1/2 tsp onion salt	1/4 tsp ground red pepper
1 (20oz) pkg cheese tortellini	
4 cups chopped cooked chicken	
4 cups chopped broccoli	

Preheat oven to 350°F. Lightly spray a 9×13-inch pan with cooking spray. Set aside. Melt butter in a Dutch oven over medium-high heat. Add flour, stirring until smooth. Add garlic and cook an additional 30 seconds. Slowly whisk in broth and half-and-half. Reduce heat to medium and cook, stirring constantly, until thickened. About 6 minutes. Remove from heat. Stir in 1 cup of Parmesan, onion salt and red pepper. Stir until cheese has melted. Stir in pasta, chicken and broccoli. Spread into prepared pan. Top with remaining 1/2 cup of Parmesan cheese. Bake uncovered for 40 to 45 minutes.



OFFICE CLOSED For Staff Training

Corridor Energy offices will be closed Friday, February 13 for an employee in-service training day.

A bill payment kiosk is available 24 hours a day at our Marion office and North Liberty operations center.



Bill payment kiosks are available 24 hours a day at our Marion office and North Liberty operations center.



**Corridor Energy
Cooperative**