



**Corridor Energy
Cooperative**

Corridor Connections

A MONTHLY PUBLICATION FOR OUR MEMBERS



May is Electrical Safety Month: Powering Safety at Home

Every May, Electrical Safety Month serves as a reminder of the importance of preventing electrical hazards at home. Electricity powers daily life, but if handled improperly, it can pose serious risks.

Corridor Energy understands the risks of improper electricity use, which is why we're committed to reminding you to practice electrical safety not only in May, but year-round.

By following key safety practices, you can reduce the risk of electrical hazards. Here are five tips for powering up safely.

1. Stay Alert. Regularly inspect your home's electrical system for any signs of damage or outdated components and replace any frayed electrical wires or cords. The Electrical Safety Foundation estimates that roughly 3,300 home fires originate from extension cords each year, either from overloading, overheating, or fraying. If you're relying on extension cords as permanent power solutions, consider contacting a qualified electrician to install additional outlets where you need them.

2. Use Surge Protectors. Protect your electronics and appliances from surges with surge protectors. These devices help divert excess voltage away from your electronics, reducing the risk of damage or electrical fires. Not all power strips include surge protection, so check labels. Additionally, surge protectors can lose effectiveness over time and should be replaced when damaged or outdated.

3. Practice Safe Power Strip Use. Do not overload outlets with power strips. Spread high-energy devices, such as heaters, microwaves, and hair dryers, across outlets. Overloaded power strips can overheat and cause fires, so check their wattage rating before plugging in.

4. Water and Electricity Don't Mix. It may seem obvious, but accidents involving water and electrical items do happen. Always keep electrical appliances and devices away from water sources, such as sinks, bathtubs, or swimming pools. Make sure your hands are dry before touching any electrical switches or appliances. Install Ground Fault Circuit Interrupters (GFCIs) in areas where water and electricity are in close proximity, including kitchens, bathrooms, and outdoor outlets.

5. Educate Family Members. To keep your household safe, discuss electrical safety as a family. Teach children not to play with outlets or appliances, and ensure they know the dangers. Practice a home fire escape plan that covers electrical safety precautions.

Practicing electrical safety protects your family, property, and peace of mind. It is a year-round responsibility. Taking these steps helps create a safer, more secure home.



Celebrating Our Scholarship Winners

We are proud to announce this year's scholarship recipients—an inspiring group of students whose dedication, leadership, and commitment to their communities truly set them apart. After careful review, we are pleased to honor the following students:

Tim Fireman, Linn-Mar, will attend the University of Iowa.

Leia Gilchrist, Alburnett, will attend the University of Iowa.

Cian Olmstead, Prairie, will attend Iowa State University.

Hannah Walvatne, CPU, will attend UNI.

Lucillia Frost, Prairie, will attend UNI.

Allie Sackett, Prairie, will attend the University of Iowa.

Hannah Storbeck, Alburnett, will attend the University of Iowa.

Taylor Knight, Liberty, will attend UNI.

Kyla Schulte, Clear Creek Amana, will attend DMACC.

Grayson Bennett, Liberty, will attend Kirkwood.

Spencer Michels, Solon, will enter the powerline program at Northwest Iowa Community College.

Simon Robertson, Anamosa, will enter the powerline program at Northwest Iowa Community College.

These students have shown exceptional drive both in and out of the classroom. From volunteering in their communities to pursuing ambitious academic goals, each recipient reflects the values we strive to support through this program.



Why Spring AC Maintenance Pays Off All Summer

As temperatures start climbing, your air conditioner will become one of the hardest-working systems in your home. The problem is that most units haven't been serviced in months or even years. For many homeowners, the first call for service happens after the system fails, usually on the hottest day of the year. That approach costs you.

A spring tune-up is a simple way to avoid higher bills and unexpected breakdowns. It is not just about making sure your AC turns on. It is about making sure it runs efficiently and delivers the comfort you expect without wasting energy.

Two of the biggest issues are dirty coils and poor airflow.

- When coils are covered in dust and debris, your system cannot transfer heat effectively. That forces it to run longer, use more electricity, and put more strain on key components. The result is higher energy use and more wear on your equipment.
- Low refrigerant is another common problem. Even small drops in efficiency cut cooling by 5% to 20%, so you pay more for less cooling.
- When airflow and refrigerant are both off, performance drops even further. The system works harder than it should, increasing the risk of breakdowns and shortening its lifespan.

Skipping maintenance may save money in the short term, but it could result in higher energy use and increased repair costs over time. As your electric cooperative, we want you to use energy wisely. Schedule now to stay comfortable, avoid repairs, and keep costs under control all summer.



Plant Smart Today, Avoid Trimming Tomorrow

A well-designed landscape does more than enhance your home's appearance—it can also help lower heating and cooling costs. When strategically placed, trees, shrubs, and vines provide shade, act as windbreaks, and reduce overall energy use.

While trees offer many benefits, proper placement is essential. **Overgrown trees and branches are one of the leading causes of power outages.** During storms or high winds, branches can come into contact with power lines, causing flickering lights or even service interruptions.

At Corridor Energy, we work to minimize tree trimming whenever possible. However, maintaining safe clearance around overhead power lines is sometimes necessary to ensure reliable service and protect our community.

HOW YOU CAN HELP

You can help reduce the need for trimming by planting trees with their mature size in mind. A good rule of thumb is to plant trees at least as far away from overhead lines as their expected mature height.

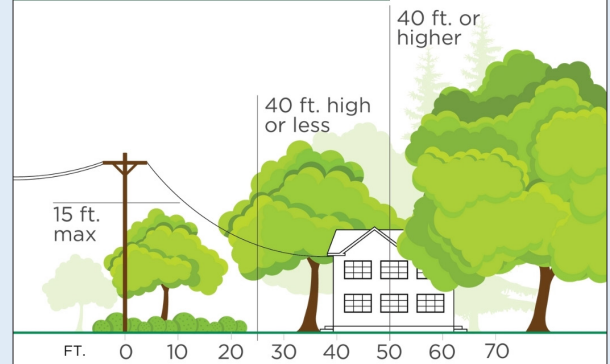
If you notice a tree or branch growing too close to power lines, please let us know. Call 319-377-1587 or report it online at www.corridorenergy.coop/reliability/tree-trimming.

It's also important to keep electrical equipment accessible. When planting near pad-mounted transformers, maintain at least 4 feet of clearance on the sides and 10 feet in front of the transformer door. This ensures crews can safely access equipment when needed.

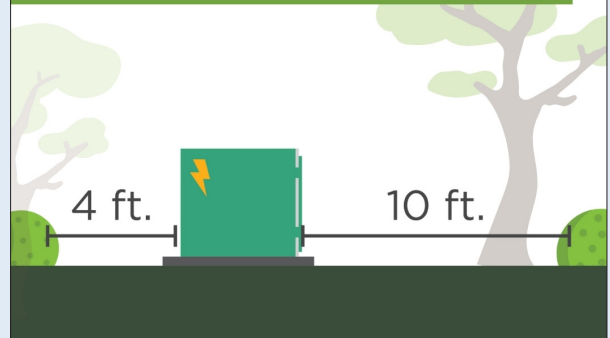
By planning your landscaping carefully and reporting potential hazards, you play an important role in helping Corridor Energy provide safe, reliable service to everyone in our community.

3 Ways to Help Limit Tree Trimming

PLANT TREES IN THE RIGHT PLACE.



KEEP TRANSFORMERS CLEAR FROM VEGETATION.



REPORT DANGEROUS TREES AND BRANCHES.



Summer Office Hours

We will begin our summer hours on May 25 and continue until Friday, September 4.

Monday - Thursday, 7:00 am to 4:00 pm
Friday, 7:00 am to 11:00 am



Is Your Contact Information Current?

It's essential to keep your contact details up to date so you receive timely notifications from us. Please make sure we have your current email address, phone number, and mailing address. Having accurate information helps us provide better customer service and communicate effectively—especially during outages or when we need to share important account updates.

Your phone number is directly linked to your service address in our outage management system for reporting and repairing outages. We also occasionally schedule planned outages to upgrade, repair, or replace equipment. When this happens, we notify affected members through automated phone messages—but you'll only receive these alerts if your phone number is verified.

MANAGE YOUR ACCOUNT NOTIFICATIONS

We don't want you to miss an important update! To make sure we have your most up-to-date contact information, and to manage how you receive account notifications, log in to the SmartHub app and go to:

[Settings > Contact Methods > Verified Contacts](#)

Be sure to **verify your contact details** so you'll receive timely text and/or email reminders about your account and important service notifications.

DON'T HAVE SMARTHUB YET?

Getting started is easy! Visit our website to download the SmartHub app for free.

If you have any questions about your account or need help updating your information, contact us at 319-377-1587.

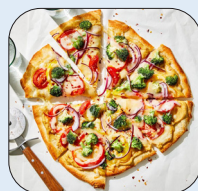


Our office will be closed on May 25 in observance of Memorial Day. Bill payment kiosks are available 24/7 at our Marion office and North Liberty operations center.



Hummus Pizza

- 1 (10 ounce) can refrigerated pizza crust dough
- 1 cup hummus spread
- 1 ½ cups sliced bell peppers, any color
- 1 cup broccoli florets
- 2 cups shredded Monterey Jack cheese



Preheat the oven to 475 degrees. Roll out pizza crust and place on a pizza pan or baking sheet. Spread a thin layer of hummus over the crust. Arrange sliced peppers and broccoli over the hummus, and top with shredded cheese. Bake in the preheated oven until the crust is golden brown and cheese is melted in the center, 10 to 15 minutes. Slice and serve.



**Corridor Energy
Cooperative**

www.corridorenergy.coop